

Project Summary

- Phase I Improvements includes updates to the city's sanitary sewer, watermain, storm sewer, & roadway infrastructure

Weekly Update

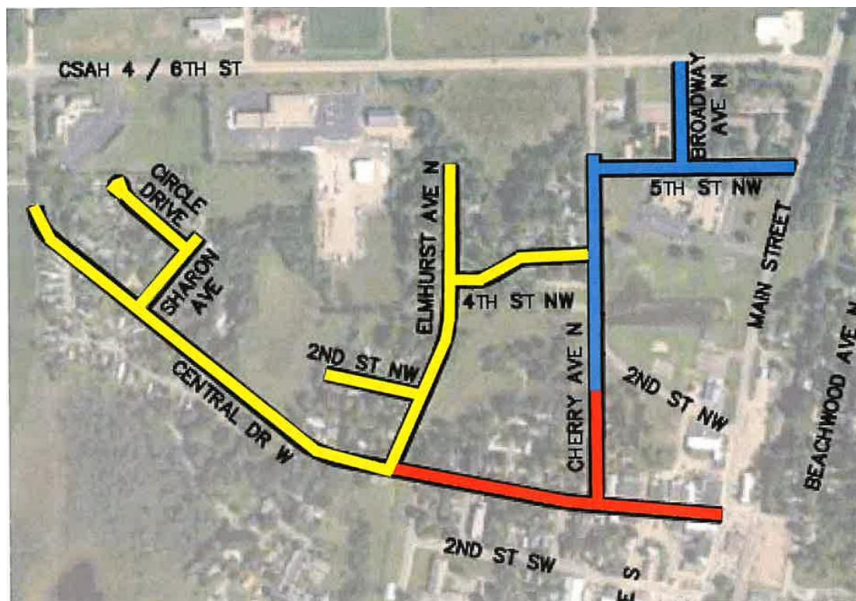
- The first week of construction has begun and includes traffic control, tree removal necessary for the improvements, street reclamation (a process to remove the existing asphalt pavement), & sidewalk/curb & gutter removals in the contractor's phase 1 area (Red area as shown on the map).

Looking Ahead

- Beginning next week, the contractor will continue operations of removals and begin setting up temporary water. This is a necessary operation to maintain safe drinking water for all residents & businesses during the construction timeframe.

Key Notes

- Mailbox clusters can be found at the intersection of Elmhurst & 2nd Avenue.
 - If your mailbox was removed, you will be able to pickup mail at this location.
- Central Avenue (Cherry to TH107) will be permanently closed starting Wednesday (04/09/2025)
- All other Streets within the project area will be closed to through traffic.



Please Utilize the following Contacts for any Questions or Concerns:

Darrell Grannis | 612-900-6363 | Lead Resident Project Representative
Ben Roehl | 320-260-0927 | Resident Project Representative
Josiah Rostad | 218-770-1608 | Signing Engineer